

KNOWLEDGE EXCHANGE CONFERENCE

## Boosting Industry-University Partnership by Academic Collaboration



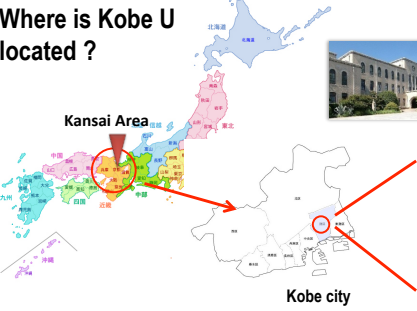





Prof. Chiharu Nakamura  
(Vice-president and director of CREATE)  
Kobe University, Japan



KNOWLEDGE EXCHANGE CONFERENCE

## Where is Kobe U located ?

Kansai Area

Kobe city

Located in the metropolitan city, Kobe (神戸)

Kobe University

KNOWLEDGE EXCHANGE CONFERENCE

## Kobe University's core value

真摯  
Integrity



Freedom  
自由

Cooperation  
協同

KNOWLEDGE EXCHANGE CONFERENCE

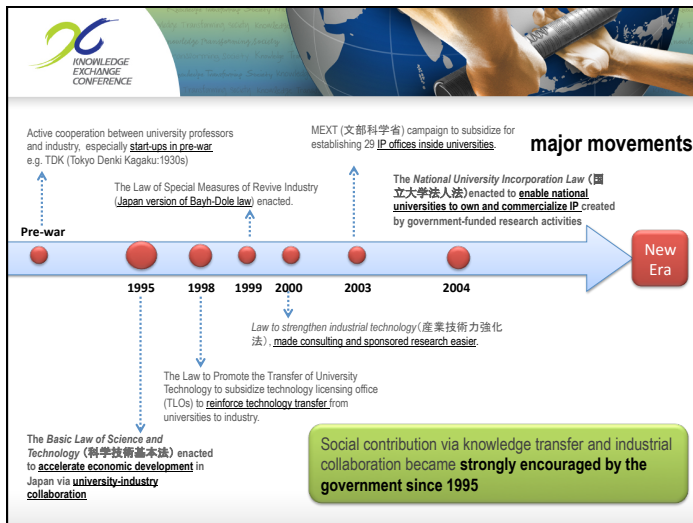
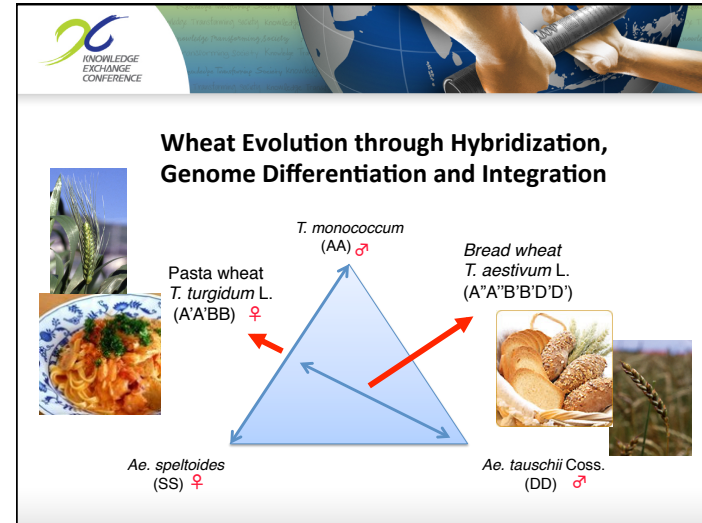
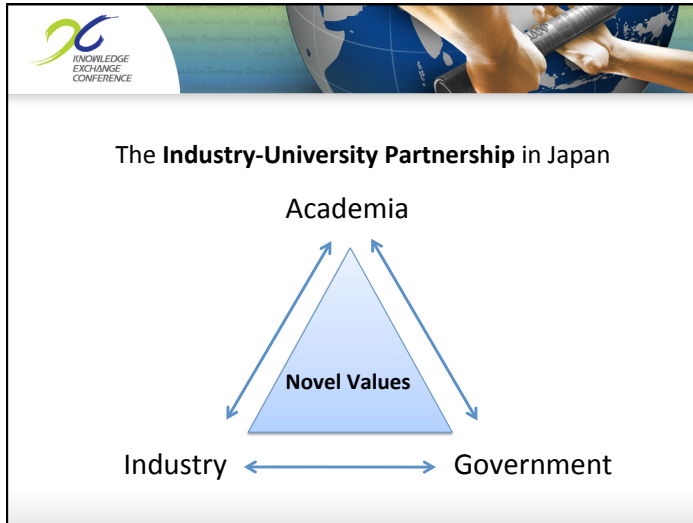
## Kobe University's pursuit of three excellences

Research



Education

Social Contribution



Kobe U's strategy on building industrial partnership

**Academic Collaboration**

as the platform to boost industrial partnership



## Academic Collaboration

### Kobe U's strategy on building industrial partnership as the platform to boost industrial partnership

- Efficient use of limited resources (research, education, facilities, man power)
- Regional and international exchange of knowledge, expertise and know-how
- Expanded corporate network
- Broader social impact and influences





CREATE (KU Center for Collaborative Research and Technology Development) is Your Partner in Creating New Value

- Reformed and established on Oct. 1<sup>st</sup> 2005
- Central organization to facilitate the transfer of knowledge to benefit our local, regional, national and international society
- Serve as a catalyst bridging the laboratory to industry



Main Office & Venture Business Labs.  
(Rokkodai campus)



Maritime Office  
(Fukae campus)



Business Technology/  
Incubation Center  
(Port Island)






### KU Activities to Achieve Global Excellence in Partnership with Industry

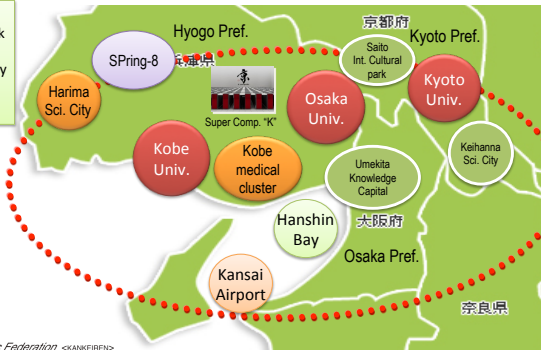


- **Active participation in big national projects:**  
MEXT-JST, METI-NEDO, JICA, ADB, etc.
- **Strong focus on broad-impact projects, i.e., "Flag-ship projects"**  
Interdisciplinary frontier sciences including health science & bio-medical production
- **Close collaboration with local and regional governments:**  
Hyogo prefecture.: agreement to support regional industries, products, medicine, etc  
City of Kobe: medical industry development at Kobe Science Cluster (Bio-Medical Cluster)
- **Large-scale and long-term partnership with internationally renowned companies:**  
Beyond technology transfer, i.e., involvement in business development, marketing, operation, etc.
- **Strive to develop entrepreneurship in the campus**  
Fostering young talent, i.e., PhD students, post-doctoral trainees, young researchers





### Endeavoring on regional academic networking

Wide-ranging academic network for boosting industry-university partnerships in Kansai region



The map highlights various hubs in the Kansai region, including Harima Sci. City, SPring-8, Kobe Univ., Kobe medical cluster, Kansai Airport, Hanshin Bay, Osaka Pref., Osaka Univ., Umekita Knowledge Capital, Keihanna Sci. City, Kyoto Univ., and Kyoto Pref. It also shows major infrastructure like Super Comp. 'K' and Saito Int. Cultural park.

 Kansai Economic Federation <<KANKEIREN>>



### Kobe University –Tohoku University Collaboration

For the recovery of Tohoku region from the disaster on 3.11

**Kobe University**

industry industry industry  
industry industry industry  
industry industry industry

**Tohoku University**

*\*Not only the economic but also the societal recovery*



### Kobe U's Connection with the Supercomputer





Supercomputer KEI

Integrated Research Center (IRC)

Kobe University promotes 8 **flagship research projects** in the strategic frontiers of "green innovation" and "life/health innovation", via the applications of Supercomputer KEI, Spring-8 and X-ray FEL



**Toward Global Excellence**



### Kobe U Integrated Research Centre in Port Island

8 Flagship Research Projects



- Kobe Space Development Research Project
- Research project on integrated bio-refinery
- Research Project on Computational Science and Computer Engineering
- Research and Education Project for Planetary Sciences
- International Research Project on Health science and Technology
- Kobe Education Project on Computational Science and Engineering
- Project on Advanced Membrane and Film Technology
- Structural-based Drug Discovery Project

**Toward Global Excellence**



### Endeavoring on international academic networking




Initiatives in EU (Belgium, Netherlands, Germany, France, and northern and eastern European countries)

KUBEC, Brussels

Initiatives in Asia/Oceania (HK, China, Korea, Indonesia, Vietnam, Australia etc.)



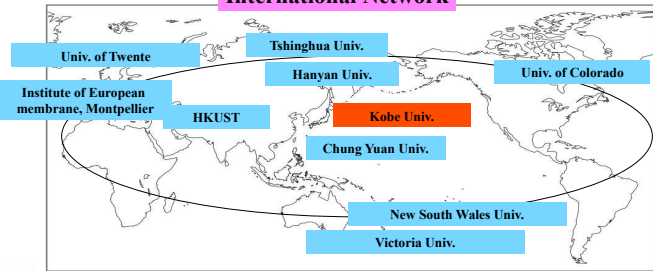
KUCO, Beijing



Recent example

### Center for Membrane and Film Technology (CMFT), Integrated Research Center, Kobe University

**International Network**



Univ. of Twente  
 Institute of European membrane, Montpellier  
 HKUST  
 Tshinghua Univ.  
 Hanyan Univ.  
 Kobe Univ.  
 Chung Yuan Univ.  
 New South Wales Univ.  
 Victoria Univ.  
 Univ. of Colorado



### Center for Membrane and Film Technology


**Company members**

**46** regional and global corporate members

- **5 Full members**  
 Asahi Kasei Chemicals, Kawasaki Heavy Industries, Ltd., Kuraray Co., Ltd., Nitto Denko Co., Renaissance Energy Research
- **41 Regular members**  
 Asahi Glass Co., Ltd., ASTOM Co., LG Electronics, Otsuka Chemical Co., Ltd., Kaneka Co., Kubota Co., Kurita Water Industries Ltd., Korea Engineering Plastics Co.LTD., Samsung, JSR Co., JNC Co., Sumitomo Chemical Co., Ltd., Sumitomo Co., Sumitomo Seika Chemicals Co., Ltd., Sumitomo Electric Industries, Ltd., Sekisui Chemical Co., Ltd., Solvay Solexis, Daikin Industries, Ltd., Daicel Chemical Industries, Ltd., The KATEKI Institute, Inc., DIC Co., Teijin Ltd., Denso Co., Toyobo Co., Ltd., Toray Industries, Inc., NOF Co., Nissei Electric Co., Ltd., Japan Exlan Co., Ltd., NGK Insulators, Ltd., Nippon Shokubai Co., Ltd., Pall Co., Ryoko Chemical Co., Ltd., Hyosung Co., Fuji Tekko Co., Ltd., Fujifilm Co., Maruo Calcium Co., Ltd., Mitsubishi Gas Chemical Company, Inc., Mitsubishi Rayon Co., Ltd., Meisui Co., Ltd., Yuasa Membrane Systems Co., Ltd., Unitika Ltd.

**Supporting members**

The New Industry Research Organization, Hyogo Prefectural Environmental Create Center Public Corporation, Water Quality Management Center of Hyogo Pref., Innovation Promoting Firm for Kobe University, LLC



## Kobe University-

### Your partner in creating new value !

